



BUSINESS PORTFOLIO

MOONBEAM THEATRE LTD

Company No. 13051088

INTRODUCTION

Mission Statement

“Moonbeam Theatre is dedicated to creating innovative multi-sensory theatre for young individuals with special educational needs and/or profound and multiple learning disabilities; providing them with opportunities to explore and discover in a playful and engaging atmosphere. We aim to create work that is accessible; inviting audiences that may not always feel included by the arts to experience interactive and collaborative theatre.”

Our audience is at the heart of all we do, which is why we create shows that not only accommodate the needs of their audiences, but also incorporates each individual into the fabric of the performance.

We want to challenge mainstream views about theatre being passive, and show parents, teachers and carers the possibilities multi-sensory theatre provides to young people with SEN/PMLD.

We are currently Resident Artists at the University of Kent.

OUR GOALS



Creativity for all – we believe everyone has a creative potential and everyone should have the opportunity to express themselves in a creative and safe environment. We aim for our work to create an environment where audiences feel comfortable to freely express themselves and feel inspired.



Inclusivity and accessibility - our work is centred around bringing accessible and inclusive theatre to our audiences. We tailor our work to each participant, ensuring they are included and can fully immerse themselves in the experience. We aim for all audiences to come away with a positive experience.



A Creative Community – we aim to form a community of SEN schools who will provide cultural enrichment for their students. Theatrical engagement will improve children's wellbeing and creative education; by providing this year on year we aim to boost the mental health of the pupils we reach.

MEET THE TEAM



Elyse Hall
Co-Founder and
Artistic Director



Colette McLoughlin
Co-Founder and
Artistic Director



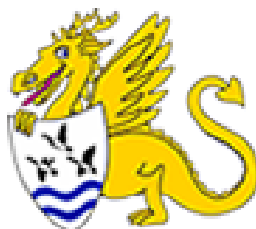
Jessica Pattrick
Co-Founder and
Artistic Director



Maddie Rigby
Associate
Artist



St Nicholas School
Partnership
School



The Wyvern School
Partnership
School



Danecourt School
Partnership
School

OUR PARTNERS AND COLLABORATORS

- University of Kent
- Frozen Light
- Moving Memory Dance Theatre Company
- Mantell Associates
- Square Pegs Theatre
- Adam Patrick Audio
- The Noise Next Door
- More Than Words Charity
- Gulbenkian Arts Centre
- Olivia Brytz Media
- St Nicholas School Canterbury
- Danecourt School Gillingham
- The Wyvern School Ashford
- Kent and Medway Progression Federation SEND Progression Partnership
- Herne Bay's East Kent Mencap group

OUR FUNDERS



Supported using public funding by
**ARTS COUNCIL
ENGLAND**



University of
Kent



PAST PROJECTS

Moonbeam Minis - This series of short videos, filmed during lockdown, included story telling, Makaton signing, multi-sensory exploration, singing and crafting for families to take part in from the safety of their homes. All episodes are available to watch for free on our [youtube channel](#).

Between The Trees - This virtual production saw four magical Pixies inviting audiences to join them as they explored their forest home and the creatures they shared it with. With Makaton sign, story telling, singing, music and multi-sensory exploration, this experience brought the forest to life in people's homes and classrooms. Subscriptions sold to schools and families nationally with unlimited viewing for a year - selling 140% more family tickets than estimated, and surpassed our 10 SEN school target. The trailer is available to watch on [youtube](#) or visit the Between the Trees page on our [website](#).

Scuba-Dee Scuba-Daa (SDSD) - School Workshops

We facilitated six research and development workshops at our partner school, St Nicholas Canterbury. The themed workshops incorporated a variety of sensory activities, songs and crafts which gave us valuable facilitation experience and provided participants with opportunities for imaginative play and exciting tactile experiences. The workshops were evaluated in order to develop a touring performance (*Scuba-Dee Scuba-Daa*) and our approach to creating accessible arts activities.

Scuba-Dee Scuba-Daa (SDSD) School Tour

Scuba-Dee Scuba-Daa - School Tour was an interactive multi-sensory touring performance, transporting participants to an aquatic wonderland through sensory exploration. This 10 week project consisted of a 5 week rehearsal period followed by a 5 week tour to SEN schools in Kent and Essex. The tour included a 30 minute workshop and a 30 minute performance and was influenced by our previous workshop program at St. Nicholas School, Canterbury. Visit the Scuba-Dee Scuba-Daa page on our [website](#).

bOing Festival

We performed at Canterbury bOing! Festival 2022 and sold out all 7 workshop sessions, created for children/young people and their carers on the University of Kent campus. Workshops were open to all but advertised as being particularly suitable for audience members up to age 13 with profound and multiple learning disabilities. We were joined by families who had previously watched Between the Trees and were excited to meet us in person.

COLLABORATIVE PROJECTS

Playing A/Part

Moonbeam Theatre were hired as creative research facilitators to work with autistic adolescent girls in schools on the: Playing A/Part project. The research explores the identities and experiences of autistic girls through creative practices. We were selected to be part of a specialist pool formed of theatre practitioners, academics and psychologists.

East Kent Mencap - Jubilee Project

Hired by East Kent Mencap to be their partner artist for the Arts Council England's 'Let's Create: Platinum Jubilee Fund', Moonbeam Theatre devised 4 workshops in the Herne Bay Centre, working towards a final performance. The fund brought together artists and community groups, with the intention of delivering creative and cultural activity that their local communities would want to take part in. Moonbeam and the group explored both individual and British identity, culminating in a talent show, providing the opportunity for every participant to express their individuality and display their various talents (including line dancing, singing, playing the guitar), supported and encouraged by the rest of the group. View the short film of our project here: [Herne Bay Day Resource & Moonbeam Theatre](#)

The Snowsmith Workshops

Hired by Half a String, a talented puppetry company, to develop and create a new schools offering for their Christmas production 'The Snowsmith.' This fun and engaging workshop was delivered to 6 schools in the area of Ware in Harlow and introduced the pupils to the characters and land of 'Thawmoor'. The workshop consisted of drama games, imagination/visualisation activities and junk modelling, where the participants used recycled materials to make their own weather catching machines. Explore [Half a String's - The Snowsmith](#)

Creative Club

Hired by the Gulbenkian Theatre at the University of Kent as their featured artist for a term, teaching participants about multi-sensory theatre. This was a 10 week workshop series with 2 sessions per week, one for children aged 5-8 and one for 9-12's, exploring theatre that incorporated all the different senses and creating theatre that actively engages their audience. We explored costumes, set, sensory messy play, and crafting.

REVIEWS

Monika Theodosiou, Wyvern School Ashford

"Scuba-Dee Scuba-Daa was brilliantly interactive. It was a wonderful performance that was totally inclusive to all young learners. The children enjoyed the interactivity of the show, with individual attention to each child. They loved the singing, repetition, bubbles and many more sensory things made the children smile. More please!"

Teacher, Whitfield Aspen School

"Our pupils are constantly having to 'fit in' to activities that visit us, so it's really great to have something that is just for them. With Moonbeam, they can be themselves"

Parent, bOing Festival 2022

"Your workshop was the highlight of our time at bOing. It was so calming and perfect for my daughter."

Liz Boardman, Whitfield Aspen School

"We had children who are usually able to sustain attention for 10-15 minutes in class, able to stay for nearly the entire performance. The way you were able to move the performance to each individual child was amazing and whilst looking through the photos, I could literally see the engagement moving from no engagement to fully sustained throughout the performance."

Parent, Between the Trees Film

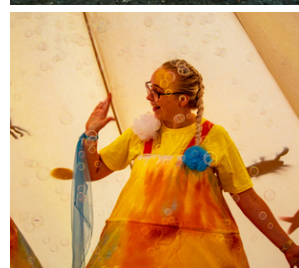
"It's really well conceived, with lovely sensory experiences. Please devise another, my child has watched this show every Friday for the last year"

Hayley Woods, St Nicholas School

"For a particular pupil in our class, who is and can be extremely anxious about any sensory or new experiences, it was rewarding to watch his confidence grow throughout the sessions and being given the time and appropriate experiences to want to engage."

Teacher, Watton-at-Stone

"The children loved it from start to finish and were very immersed. The session was super engaging and loved how interactive it was"



UPCOMING PROJECT

DIVE!

“

DIVE! is an interactive multi-sensory touring performance which will give students an opportunity to be imaginative and creative as they work alongside Moonbeam Theatre as co-devisers to create a brand new under-the-sea themed show.

”

This project consists of a 12 week Research and Development (R&D) stage, followed by a 6 week tour around SEN schools nationally. Moonbeam Theatre will be working alongside the pupils of St. Nicholas School Canterbury, The Wyvern School Ashford, Danecourt School Gillingham and University of Kent, collaborating directly with our demographic, their carers and families. We have identified these participants as, according to the Active Lives Survey, audiences of this demographic are 12% less likely to access cultural events.

The outcome of the R&D phase will be a magical underwater world in a transformable performance tent ready for tour around the country, with interest from 25 schools nationally, including Scotland and Wales.

This project is needed as we engage with a community that are often overlooked by mainstream theatre as it is passive, which is not suitable for PMLD audiences who need to be actively engaged. Theatre opportunities for PMLD audiences are scarce “fewer than 30% of theatres have any provision for disabled audiences at all”- Theatre Access Survey 2021.

This project addresses and demonstrates the limitless possibilities of who can create and consume art. We are one of the only companies that makes multi-sensory theatre in the country and we are passionate about bringing the pupils into the creative process to ensure their voices are reflected in the show. They will see their ideas come to life in front of them, providing a sense of creative satisfaction for an audience group who very rarely have this opportunity.

This project will form a community of SEN schools and will provide cultural enrichment for their students, addressing the lack of opportunity for this underserved audience in theatres by bringing the work to them. Theatrical engagement will improve children’s wellbeing and creative education; by providing this on a county wide basis year on year we can boost the mental health of the children and their families.

SPONSORSHIP

SUPPORT MOONBEAM THEATRE

Although the world has begun to return to normal following the pandemic, the effects on the arts industry are long lasting. With Arts Council England and other Trusts and Foundations receiving a high volume of applications they are currently unable to meet the demand and fund many worthwhile projects. Now more than ever we need your help to continue doing what we do.

We are passionate about our work and love what we do but it is not possible to continue without funding. Sponsorships and donor support will allow us to continue to work, develop our artistic quality and will help fund our current and future projects. We are a non-profit company, however we still have core company costs, artist fees and material costs to cover. A donation of any size would help us achieve our aims and reach more people.

We want as many people as possible to experience the vibrant world of theatre and your donations allow us to continue to create multi-sensory, accessible work for young individuals with PMLD.

Support could be in the form of:

- Monetary donations
- Project/Tour Sponsorships
- Donation of materials and resources
- Spreading the word of our theatre/work

If you would like to sponsor Moonbeam Theatre please complete the Donation Interest form below or reach out to us at moonbeamtheatre@gmail.com to talk about our upcoming projects or any support you would like to provide.



[LINK TO DONATION INTEREST FORM](#)



For more information and if you'd like to be
involved or support Moonbeam Theatre's
work, please contact the team on
moonbeamtheatre@gmail.com

